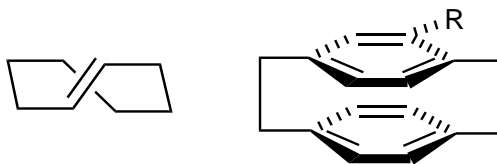


### planar chirality

Term used by some authorities to refer to *stereoisomerism* resulting from the arrangement of out-of-plane groups with respect to a plane (*chirality plane*). It is exemplified by the *atropisomerism* of (*E*)-cyclooctene (chiral plane = double bond and attached atoms) or monosubstituted paracyclophane (chiral plane = substituted ring). The configuration of molecular entities possessing planar chirality is specified by the stereodescriptor  $sR_p$  and  $S_p$  ( or *P* and *M*).



1996, 68, 2213