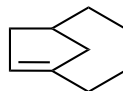


Bredt's rule

A double bond cannot be placed with one terminus at the bridgehead of a bridged ring system unless the rings are large enough to accommodate the double bond without excessive *strain*. For example, while bicyclo[2.2.1]hept-1-ene is only capable of existence as a *transient*, its higher homologues having a double bond at the bridgehead position have been isolated: e.g.



bicyclo[3.3.1]non-1-ene



bicyclo[4.2.1]non-1(8)-ene

1994, 66, 1077; see also 1996, 68, 2201