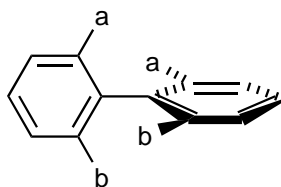
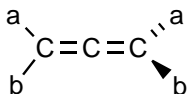


axial chirality

Term used to refer to stereoisomerism resulting from the non-planar arrangement of four groups in pairs about a *chirality axis*. It is exemplified by allenes $abC=C=Ccd$ (or $abC=C=Cab$) and by the *atropisomerism* of *ortho*-substituted biphenyls.

The *configuration* in molecular entities possessing axial chirality is specified by the stereodescriptors R_a and S_a (or by P or M).



1996, 68, 2201