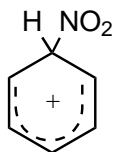


arenium ions

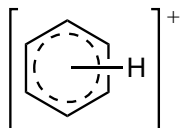
Cations derived formally by the addition of a hydron or other cationic species to any position of an arene, e.g. $C_6H_7^+$, benzenium.

The term includes:

1. Arenium σ -adducts (Wheland intermediates) (which are considered to be intermediates in electrophilic aromatic substitution reactions) and other cyclohexadienyl cations.



2. Arenium π -adducts, such as:



[σ -adduct (sigma-adduct), π -adduct (pi-adduct)].

See [aryl cations](#).

1995, 67, 1318; see also 1994, 66, 1077