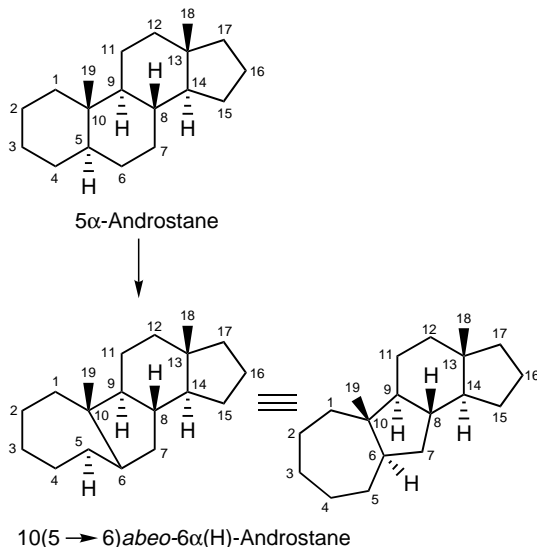


### *abeo-*

Bond migration, i.e. the formal transfer of one end of a skeletal bond to another position, with a compensating transfer of a hydrogen atom, can be indicated by a prefix of the form ' $x(y \rightarrow z)$ *abeo-*'.

The prefix is compiled as follows: a numeral denoting the stationary (unchanged) end of the migrating bond ( $x$ ) is followed by parentheses enclosing the locant denoting the original position ( $y$ ) from which the other end of this bond has migrated, an arrow, and the locant ( $z$ ) denoting the new position to which the bond has moved. The closing parenthesis is followed by the italicized prefix *abeo-* (Latin: I go away) to indicate bond migration. The original numbering is retained for the new compound and is used for the numbers  $x$ ,  $y$  and  $z$ . It is always necessary to specify the resulting stereochemistry.



B.B.(G) 31